

MARK	SECTION PROPERTIES	GUSSET PLATE THICKNESS
A	2L 2 x 2 x 1/4"	10MM
B	L 2 x 2 x 1/4"	

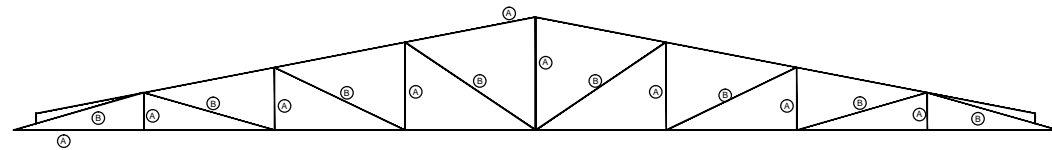


DIAGRAM STEEL TRUSS-1

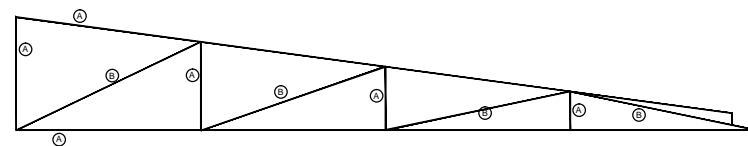


DIAGRAM STEEL TRUSS-2

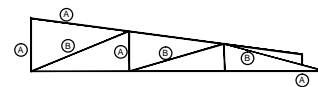
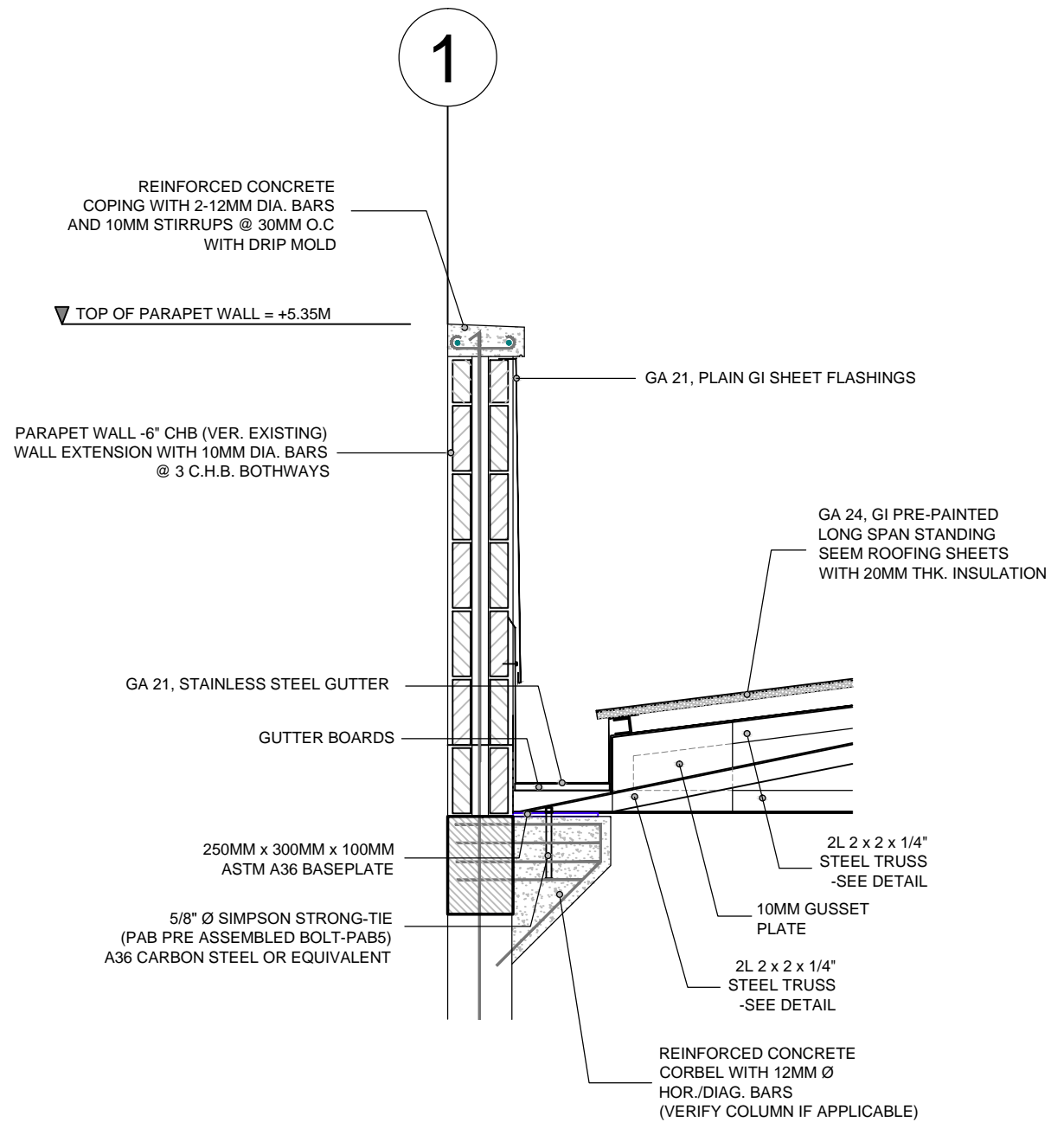


DIAGRAM STEEL TRUSS-3



REGION IX WAREHOUSE

ROOF TRUSS DIAGRAM

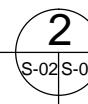


S-02S-02 SCALE

1:100M

REGION IX WAREHOUSE

PARAPET WALL BLOW-UP SECTION



S-02S-02 SCALE

1:20M



Republic of the Philippines
DEPARTMENT OF HEALTH

COMMISSION ON
POPULATION AND DEVELOPMENT

COMMISSION ON POPULATION, WELFAREVILLE COMPOUND,
ACACIA LANE, BRGY. ADDITION HILLS, MANDALUYONG CITY

THIS DRAWING AS AN INSTRUMENT OF SERVICE IS THE PROPERTY OF RYAN ANGELO C. GAVINO, REGISTERED ARCHITECT AND AS SUCH MUST NOT BE COPIED OR REPRODUCED IN WHOLE OR IN PART WITHOUT HIS PERMISSION. ALL DRAWINGS ARE TO BE RETURNED WHEN NO LONGER IN USE.

WRITTEN DIMENSIONS ON THESE DRAWINGS SHALL HAVE PRECEDENCE OVER SCALED DIMENSIONS. THE CONTRACTOR/SUBCONTRACTOR SHALL VERIFY & BE RESPONSIBLE FOR ALL DIMENSIONS AND JOBSITE CONDITIONS. ARCHITECT MUST BE NOTIFIED PRIOR TO CONSTRUCTION & FABRICATION.

Architect

ARCH. RYAN ANGELO C. GAVINO
PRC: PTR:
TIN: Issued on: Issued at:

Engineer

ENGR. JANELLE MAE G. USAL
PRC: PTR:
TIN: Issued on: Issued at:

Project Title

REPAIR AND RENOVATION OF
WAREHOUSE-REGION IX - ZAMBOANGA
Location:

No.	Date	Revision(s)	Drawing / Copy Status For Client Approval

Sheet Contents

DOORS AND WINDOWS SCHED

Date
(TBD)
Drawn by:
(TBD)
Approved by:
Project Number:
Designed/Checked by:

Sheet Number

S-02