

# LOAD SCHEDULE NTS

PANEL : PP1  
 ENCLOSURE : NEMA-1  
 MOUNTING : SURFACE  
 LOCATION : (AS SHOWN)

MAIN : 125AT, 225AF, 2P, MCCB  
 SERVICE : 230 VAC, 1Ø, 60Hz, 2W+G  
 KAIC : BRANCHES - 10,000 AIC  
 FED FROM : ATS

CKT NO.	DESCRIPTION OF LOADS	VOLT AMPERE	CIRCUIT BREAKER			SIZE OF WIRE (mm) <sup>2</sup>		CONDUIT mmØ PVC (O.D.)
			POLE	AT	AF	PHASE	GROUND	
1	ACCU - 5TR	5000	2	50	100	2-8.0(THHN)	1-5.5(TW)	25
2	ACCU - 5TR	5000	2	50	100	2-8.0(THHN)	1-5.5(TW)	25
3	ACCU - 5TR	5000	2	50	100	2-8.0(THHN)	1-5.5(TW)	25
4	WAC - 1.5 HP	2300	2	30	100	2-5.5(THHN)	1-5.5(TW)	25
5	WAC - 1.5 HP	2300	2	30	100	2-5.5(THHN)	1-5.5(TW)	25
6	WAC - 1.5 HP	2300	2	30	100	2-5.5(THHN)	1-5.5(TW)	25
7	S P A R E	-	2	30	100	STUB-OUT		25
8	S P A R E	-	2	30	100	STUB-OUT		25
9	LIGHTING OUTLET	575	2	20	100	2-3.5(THHN)	1-3.5(TW)	20
10	LIGHTING OUTLET	1475	2	20	100	2-3.5(THHN)	1-3.5(TW)	20
11	CONVENIENCE OUTLET (6)	1080	2	20	100	2-3.5(THHN)	1-3.5(TW)	20
12	CONVENIENCE OUTLET (2)	1260	2	20	100	2-3.5(THHN)	1-3.5(TW)	20
13	S P A R E	-	2	20	100	STUB-OUT		20
14	S P A R E	-	2	20	100	STUB-OUT		20
15	S P A R E	-	2	20	100	STUB-OUT		20
16	S P A R E	-	2	20	100	STUB-OUT		20
17	SPACE W/ COVER	-	2	-	100	-	-	-
18	SPACE W/ COVER	-	2	-	100	-	-	-
19	SPACE W/ COVER	-	2	-	100	-	-	-
20	SPACE W/ COVER	-	2	-	100	-	-	-

TOTAL CONNECTED LOAD : 26,290  
 DEMAND FACTOR : 80%

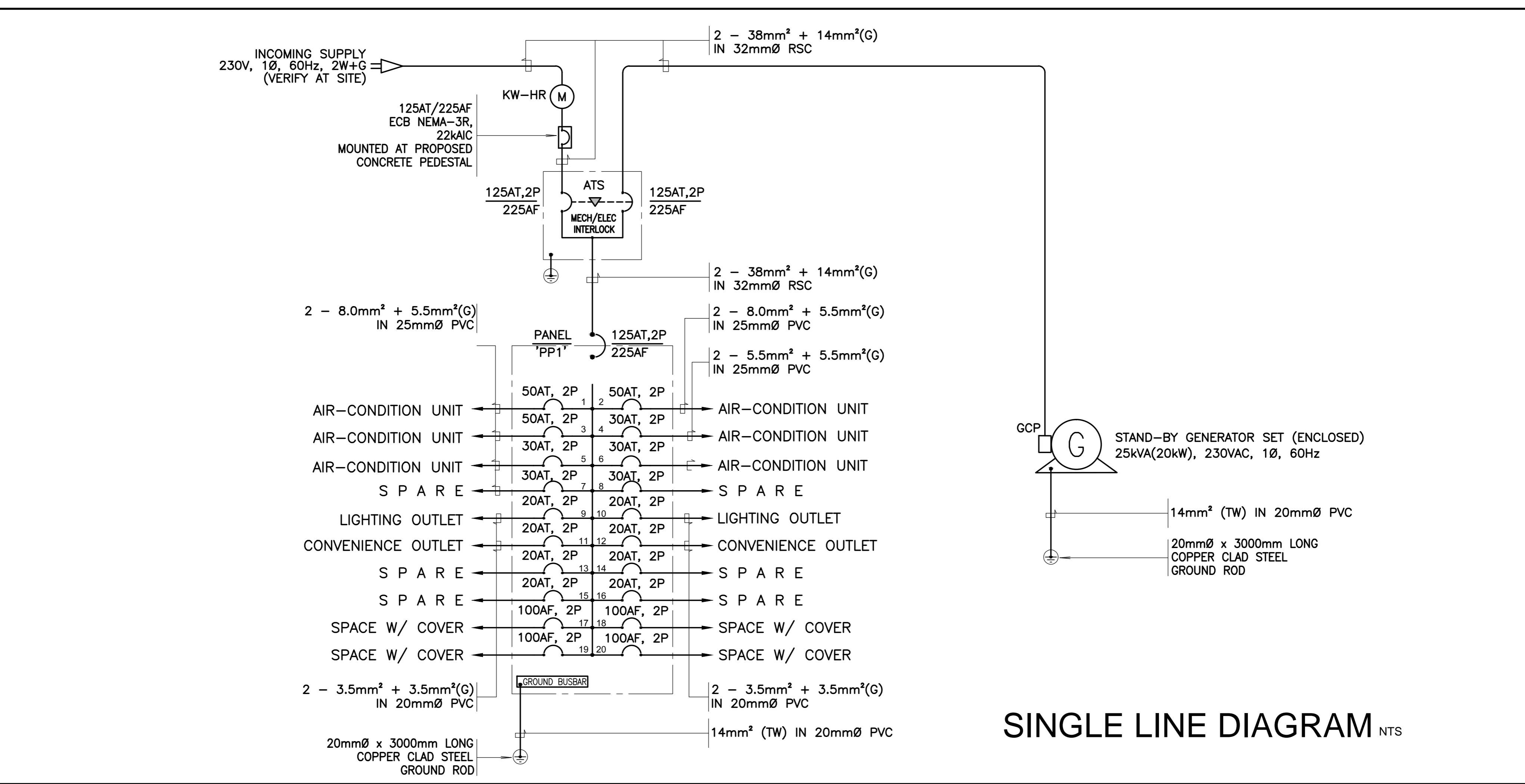
TOTAL DEMAND LOAD IN AMPERES :  

$$\frac{26290 \times 0.80}{230} = 91.44A$$

$$91.44 + (1.5 \times 20) = 121.44 A$$
 FEEDER SIZE : 2 - 38mm (THW) + 1-14mm (TW) IN 32mmØ RSC  
 MAIN BREAKER : 125AT/225AF, 2P, 22KAIC

USE GENSET: 1-25kVA (20kW), 230VAC, 1Ø, 60Hz  

$$S = (26290 \times 0.80 \times 1.25) / 1000 = 26.29kVA$$



**SINGLE LINE DIAGRAM NTS**

<p>Republic of the Philippines DEPARTMENT OF HEALTH  COMMISSION ON POPULATION AND DEVELOPMENT  COMMISSION ON POPULATION, WELFAREVILLE COMPOUND, ACACIA LANE, BRGY. ADDITION HILLS, MANDALUYONG CITY</p>	<p>THIS DRAWING AS AN INSTRUMENT OF SERVICE IS THE PROPERTY OF RYAN ANGELO C GAVINO, REGISTERED ARCHITECT AND AS SUCH MUST NOT BE COPIED OR REPRODUCED IN WHOLE OR IN PART WITHOUT HIS PERMISSION. ALL DRAWINGS ARE TO BE RETURNED WHEN NO LONGER IN USE. REPUBLIC ACT 9266</p>	<p>PROFESSIONAL ELECTRICAL ENGINEER</p> <p>PRC: _____ PTR: _____</p> <p>TIN: _____ Issued on: _____ Issued at: _____</p>	<p>Project Title</p> <p><b>REPAIR AND RENOVATION OF WAREHOUSE-ZAMBOANGA</b></p> <p>Location: _____</p>	<p>Sheet Number</p> <p><b>E-001</b></p>
	<p>Location: _____</p>			