

Regional Socio-Demographic Situation

Population of Region IX – Zamboanga Peninsula (Based on the 2015 Census of Population)

- The population of Region IX (Zamboanga Peninsula) as of August 1, 2015 was 3,629,783, based on the 2015 Census of Population (POPCEN 2015).
- The 2015 population of the region is higher by 222,430 compared with the population of 3.41 million in 2010, and by 798,371 compared with the population of 2.83 million in 2000. Refer to Table 1.

**Table 1. Population of Region IX – Zamboanga Peninsula
(Based on the 2000, 2010, and 2015 Censuses)**

Census Year	Census Reference Date	Population (in millions)
2000	May 1, 2000	2.83
2010	May 1, 2010	3.41
2015	August 1, 2015	3.63

- The population of Region IX increased by 1.21 percent annually, on average, during the period 2010 to 2015. By comparison, the rate at which the region's population grew during the period 2000 to 2010 was higher at 1.87 percent. See Table 2.

**Table 2. Annual Population Growth Rate:
Region IX – Zamboanga Peninsula
(Based on the 2000, 2010, and 2015 Censuses)**

Reference Period	Annual Population Growth Rate (in percent)
2010-2015	1.21
2000-2010	1.87

- Among the three provinces comprising the region, Zamboanga del Norte had the biggest population in 2015 with 1,011,393 persons, followed closely by Zamboanga del Sur with 1,010,674 persons. Zamboanga Sibugay had the smallest population with 633 thousand. Refer to Table 3.
- Zamboanga City, the only highly urbanized city in the region, posted a population of 862 thousand.
- The City of Isabela, on the other hand, had a population of 113 thousand. This city is a component city in Region IX whose province, Basilan, is under the regional jurisdiction of the Autonomous Region in Muslim Mindanao (ARMM).
- The total population of Region IX accounted for about 3.6 percent of the Philippine population in 2015.

**Table 3. Population by Province/Highly Urbanized City:
Region IX – Zamboanga Peninsula
(Based on the 2000, 2010, and 2015 Censuses)**

Province/Highly Urbanized City	Population (in thousands)		
	2000	2010	2015
Zamboanga del Norte	823	958	1,011
Zamboanga del Sur	836	960	1,011
<i>Zamboanga City</i>	602	807	862
Zamboanga Sibugay	497	585	633
<i>City of Isabela</i> *	73	98	113

* Component City of the Province of Basilan

- Zamboanga Sibugay was the fastest growing province in the region with an average annual population growth rate (PGR) of 1.53 percent during the period 2010 to 2015. It was followed by Zamboanga del Norte (1.04 percent) and Zamboanga del Sur with 0.99 percent. See Table 4.
- Zamboanga City posted a PGR of 1.26 percent.
- The City of Isabela had a PGR of 2.74 percent.

**Table 4. Annual Population Growth Rate by Province/Highly Urbanized City: Region IX –
Zamboanga Peninsula
(Based on the 2000, 2010, and 2015 Censuses)**

Province/Highly Urbanized City	Population Growth Rate	
	2010-2015	2000-2010
Zamboanga del Norte	1.04	1.53
Zamboanga del Sur	0.99	1.39
<i>Zamboanga City</i>	1.26	2.98
Zamboanga Sibugay	1.53	1.63
<i>City of Isabela</i> *	2.74	2.97

* Component City of the Province of Basilan

- Region IX is composed of one highly urbanized city, four component cities (including the City of Isabela), 67 municipalities, and 1,904 barangays.
- Among the cities and municipalities in the region, the largest in terms of population size is Pagadian City, Zamboanga del Sur with 199,060 persons. It was followed by Dipolog City, Zamboanga del Norte (130,759) and the City of Isabela, Basilan (112,788). Refer to Table 5.

**Table 5. Top Ten Most Populous Cities*/Municipalities:
Region IX – Zamboanga Peninsula, 2015**

Rank	City/Municipality	Province	Population
1	Pagadian City	Zamboanga del Sur	199,060
2	Dipolog City	Zamboanga del Norte	130,759
3	City of Isabela	Basilan	112,788
4	Sindangan	Zamboanga del Norte	99,435
5	Dapitan City	Zamboanga del Norte	82,418
6	Ipil	Zamboanga Sibugay	74,656
7	Molave	Zamboanga del Sur	52,006
8	Aurora	Zamboanga del Sur	50,755
9	Titay	Zamboanga Sibugay	49,673
10	Dumingag	Zamboanga del Sur	47,485

* Excluding Zamboanga City

- La Libertad in Zamboanga del Norte is the least populous city/municipality in Region IX with 8,406 persons. It was followed by Josefina in Zamboanga del Sur (11,799) and Mutia in Zamboanga del Norte (12,675). See Table 6.

**Table 6. Ten Least Populous Cities*/Municipalities:
Region IX – Zamboanga Peninsula, 2015**

Rank	City/Municipality	Province	Population
1	La Libertad	Zamboanga del Norte	8,406
2	Josefina	Zamboanga del Sur	11,799
3	Mutia	Zamboanga del Norte	12,675
4	Rizal	Zamboanga del Norte	14,021
5	Godod	Zamboanga del Norte	17,424
6	Sibutad	Zamboanga del Norte	17,645
7	Sominot (Don Mariano Marcos)	Zamboanga del Sur	18,537
8	San Miguel	Zamboanga del Sur	19,205
9	Piñan (New Piñan)	Zamboanga del Norte	20,161
10	Lakewood	Zamboanga del Sur	20,374

* Excluding Zamboanga City

- Of the 1,904 barangays in Region IX, the top ten largest in terms of population size are all located in Zamboanga City. Topping the list of the most populous barangays in the region is Talon-talon with 34,916 persons, followed by Mampang (34,312) and Tumaga (30,824). Refer to Table 7.

**Table 7. Top Ten Most Populous Barangays:
Region IX – Zamboanga Peninsula, 2015**

Rank	Barangay	City/Municipality	Population
1	Talon-talon	Zamboanga City	34,916
2	Mampang	Zamboanga City	34,312
3	Tumaga	Zamboanga City	30,824
4	Tetuan	Zamboanga City	29,785
5	Calarian	Zamboanga City	28,899
6	San Roque	Zamboanga City	27,889
7	Pasonanca	Zamboanga City	27,374
8	Santa Maria	Zamboanga City	25,185
9	Baliwasan	Zamboanga City	25,042
10	Tugbungan	Zamboanga City	23,837

POPULATION AND ANNUAL GROWTH RATES FOR THE PHILIPPINES REGION IX (ZAMBOANGA PENINSULA) BASED ON 2000, 2010, AND 2015 CENSUSES

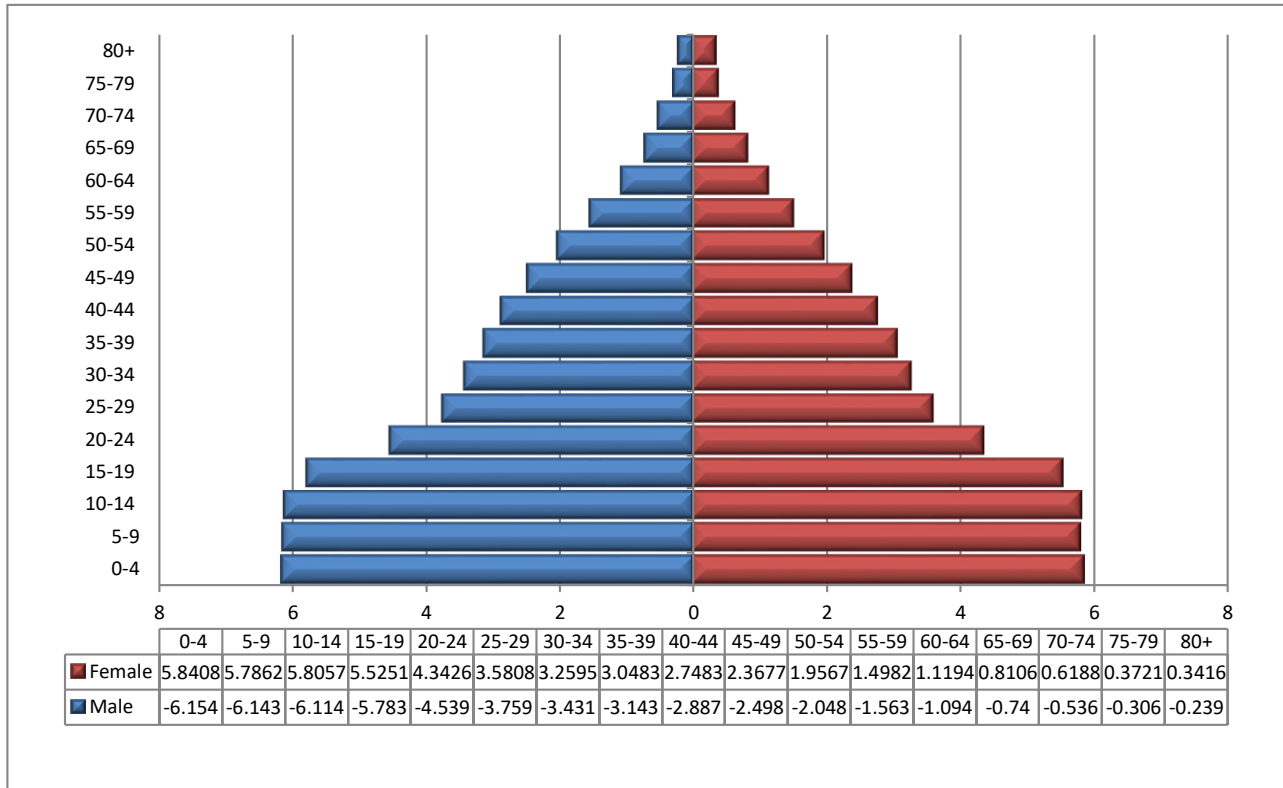
REGION, PROVINCE, AND HIGHLY URBANIZED CITY	TOTAL POPULATION						POPULATION GROWTH RATE		
	1-May-00		1-May-10		1-Aug-15		2000-2010	2010-2015	2000-2015
PHILIPPINES (medium)	76,506,928	a	93,135,220	b	101,985,552	c	1.99	1.74	1.90
PHILIPPINES (low)	76,506,928	a	93,135,220	b	101,691,996	c	1.99	1.69	1.88
PHILIPPINES (official count)	76,506,928	a	92,337,852	b	100,981,437	c	1.90	1.72	1.84
REGION IX (ZAMBOANGA PENINSULA)	2,831,412		3,407,353		3,629,783		1.87	1.21	1.64
ZAMBOANGA DEL NORTE	823,130		957,997		1,011,393		1.53	1.04	1.36
ZAMBOANGA DEL SUR (excluding ZAMBO. CITY)	836,217		959,685		1,010,674		1.39	0.99	1.25
ZAMBOANGA CITY	601,794		807,129		861,799		2.98	1.26	2.38
ZAMBOANGA SIBUGAY	497,239		584,685		633,129		1.63	1.53	1.60
CITY OF ISABELA	73,032		97,857		112,788		2.97	2.74	2.89

**POPULATION AND ANNUAL GROWTH RATES BY PROVINCE, CITY, AND MUNICIPALITY
REGION IX (ZAMBOANGA PENINSULA): 2000, 2010, AND 2015**

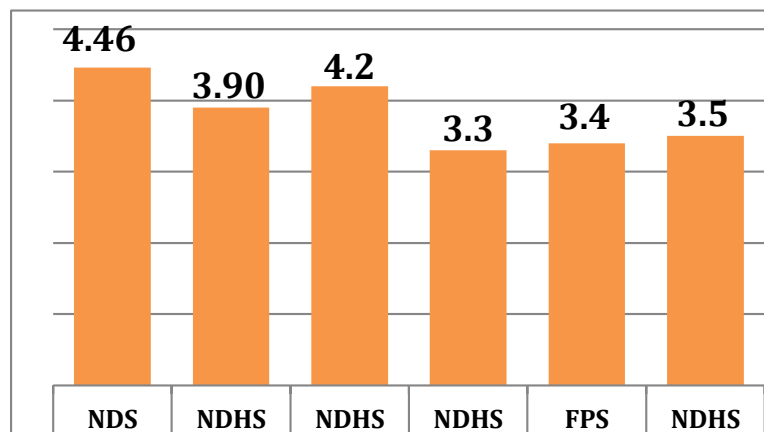
REGION, PROVINCE, AND CITY/MUNICIPALITY	TOTAL POPULATION						POPULATION GROWTH RATE		
	1-May-00		1-May-10		1-Aug-15		2000-2010	2010-2015	2000-2015
REGION IX	2,831,412		3,407,353		3,629,783		1.87	1.21	1.64

Age-Sex Structure of the Population

Based on Philippine Statistics Authority, 2010 Census of Population and Housing

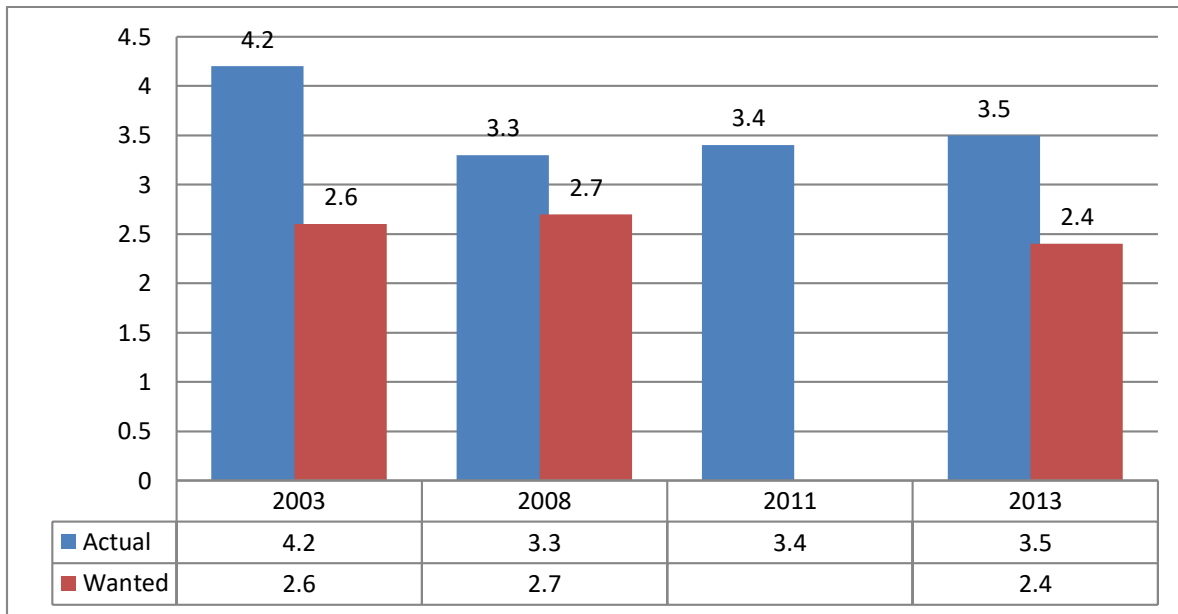


Trends in Total Fertility Rates, Region IX (average number of births a woman would have by the end of her reproductive years)



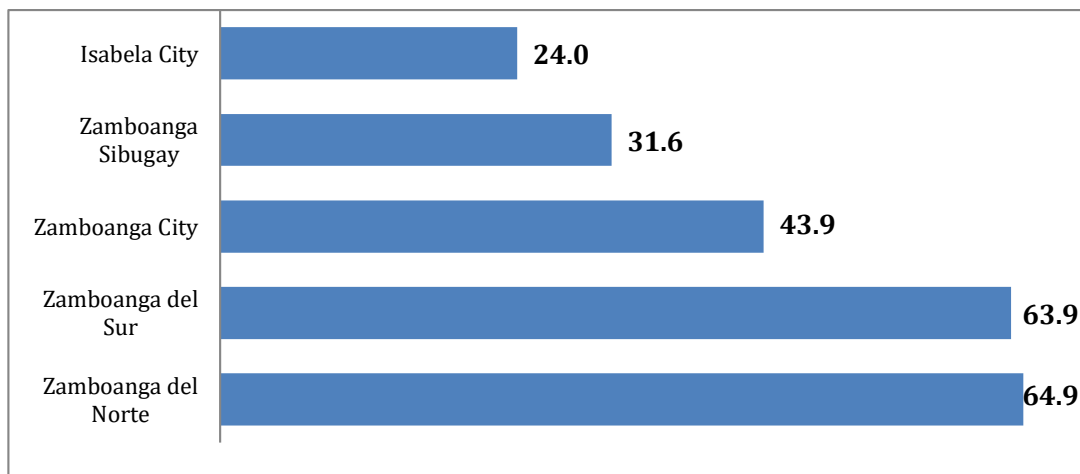
- While fertility slowed down by one child, from a level of 4.2 to 3.3 children per woman in a span of 10 years time. Women in the region, on the average, still do get to have one child more than

Trends in Fertility Rates Region IX: 2003,2008,2011,2013 and Wanted Fertility Rates: 2003, 2008, and 2013



- While fertility slowed down by one child, from a level of 4.2 to 3.3 children per woman in a span of 10 years time. Women in the region, on the average, still do get to have one child more than what they had actually wanted.

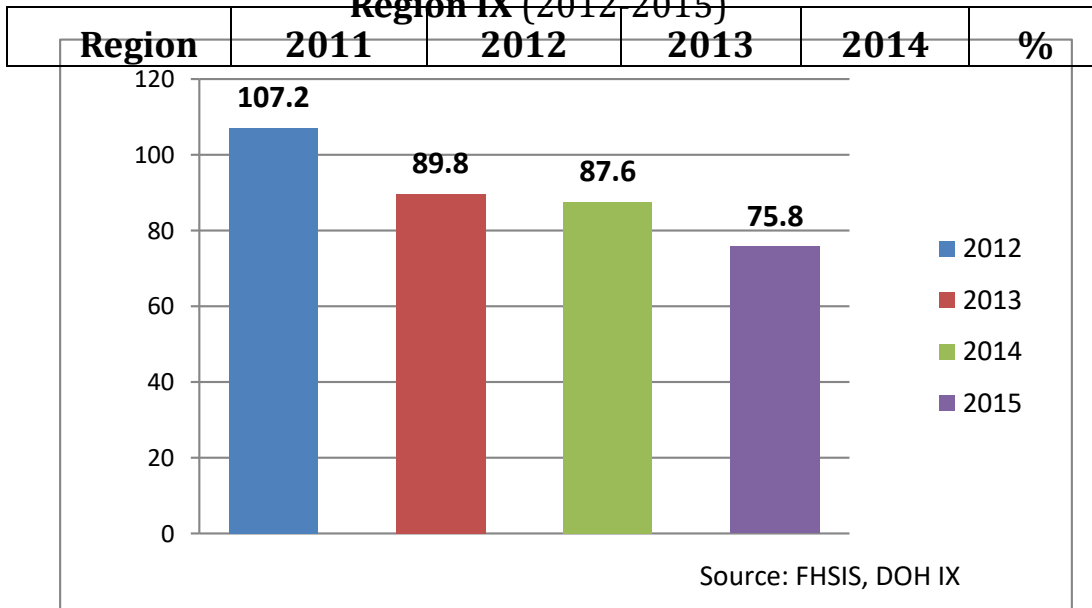
Contraceptive Prevalence Rate 2015, DOH RO IX FHSIS Report



- Contraceptive prevalence rate of the region had been placed at 52.3% as per FHSIS program report of DOH IX. Among the major areas in the region, Isabela City, Basilan Province posted the lowest level of percentage of women using modern methods of contraceptive in 2015.

Maternal Mortality Ratio

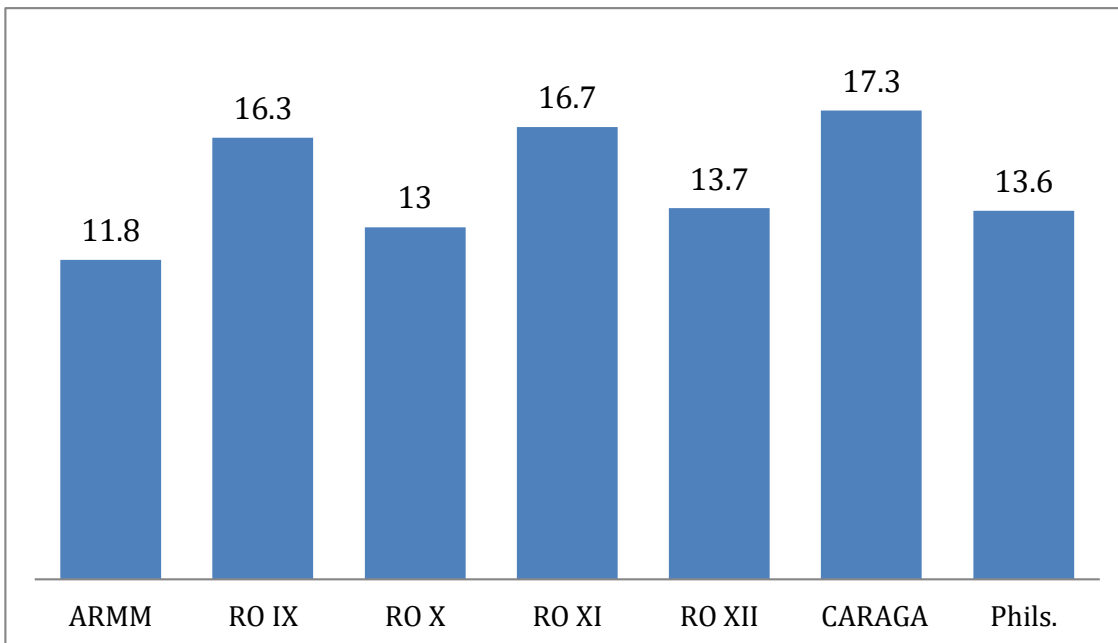
Region IX (2012-2015)



- DOH IX program report indicate notable decreases in the number of maternal deaths due to complications from pregnancy related causes in the region with a current reported MMR of 75.8 in 2015. If current trends continue, Region IX may likely be able to achieve the MDG MMR target of 52 in a matter of time.

Teenage Pregnancy (15-24)

YAFS4, 2014



Number & Percent of Births by Teenage Mothers (Aged 10-19)

By Regions: 2011-2014

NCR	27,098	27,015	27,248	26,606	12.7%
CAR	3,934	3,961	4,053	3,869	1.8%
REGION I	11,014	10,564	10,694	10,398	4.9%
REGION II	8,925	9,285	9,279	9,285	4.4%
REGION III	23,900	24,895	24,532	24,729	11.8%
REGION IV-A	28,694	29,135	29,217	28,605	13.6%
REGION IV-B	5,593	5,963	6,015	6,212	3.0%
REGION V	12,228	12,610	12,695	12,719	6.1%
REGION VI	12,353	12,985	12,957	12,736	6.1%
REGION VII	16,628	17,359	16,927	16,708	8.0%
REGION VIII	8,425	8,707	8,668	9,155	4.4%
REGION IX	7,526	7,400	7,130	7,861	3.7%
REGION X	10,950	11,522	11,644	11,971	5.7%
REGION XI	12,271	12,045	11,730	12,195	5.8%
REGION XII	8,987	10,169	11,161	10,721	5.1%
ARMM	383	1,056	1,076	1,208	0.6%
REGION XIII	4,744	4,603	4,554	4,894	2.3%

- As culled out from birth registry records of the PSA, registered births to mothers below the age of 20 years old in region IX account to about 3.7% of the total births registered to teenage mothers in the country.

Rate of Urbanization: 1970-2010

Year	Region IX	Philippines
1970	15.7	31.8
1975	14.9	31.6
1980	17.1	37.3
1990	30.7	48.6
2000	26.0	48.0
2007	32.2	42.4
2010	34.7	45.3

- Rate of Urbanization refers to the proportion of people living in the urban centers in a particular place over time. Census data for the period 1970-2010 shows a continuous trend of narrowing the gap between data of the region and the country in the 70s and 80s compared to the figures reported during the period 2000 to 2010. Increasing trend of movement of people to the urban centers is causing population of cities and other centers to swell.

Poverty Incidence among Population

2003-2015

Province/City	2003	2006	2009	2012	2015
Philippines	30.0	26.6	26.3	25.2	26.3
Region IX	49.2	45.0	45.8	40.1	39.0
Zamboanga del Norte	68.5	65.5	68.5	54.4	56.1
Zamboanga del Sur	38.8	31.7	31.6	32.0	29.3
Zamboanga Sibugay	50.3	50.7	52.7	44.8	44.9
Isabela City	33.5	41.9	27.4	22.1	20.8